

# WEETU

## Meeting dates for 2010

11th January	<i>Evening Meeting</i>
1st February	<i>Lunchtime Meeting</i>
1st March	<i>Lunchtime Meeting</i>
12th April	<i>Evening Meeting</i>
10th May	<i>Lunchtime Meeting</i>
7th June	<i>Evening Meeting</i>
5th July	<i>Lunchtime Meeting</i>
2nd August	<i>Evening Meeting</i>
6th September	<i>Lunchtime Meeting</i>
4th October	<i>Evening Meeting</i>
1st November	<i>Lunchtime Meeting</i>
6th December	<i>Christmas Event</i>

## *WEETUnetwork*

**For details and information, contact:**

**Jeanette Flemons  
WEETU  
2 Redwell Street  
Norwich  
NR2 4SN**

**Phone: 01603 878343  
Fax: 01603 776426  
Email: [networking@weetu.org](mailto:networking@weetu.org)  
Website: [www.weetu.org/network](http://www.weetu.org/network)**

## Benefits of Membership

- **Full Calendar of monthly events**
- **Opportunities to promote your business**
- **Network with peers**
- **Forum to debate women's issues**
- **Quarterly Newsletter**
- **Build business relationships**
- **Learn from shared experiences**
- **Support of WEETU services**
- **Selection of venues and meeting times**
- **Guests welcome**

## *WEETUnetwork*

[www.weetu.org/network](http://www.weetu.org/network)

## Membership Information and Application Form



***For Women who  
mean Business***

Email: [networking@weetu.org](mailto:networking@weetu.org)



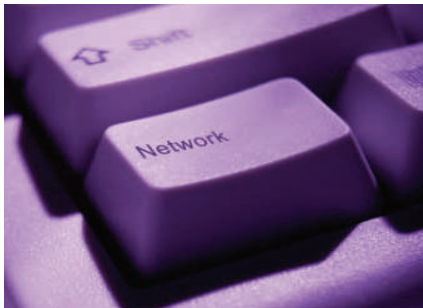
## Introduction to the WEETUnetwork

WEETU (the Women's Employment and Enterprise Training Unit) has been established for over 22 years as a "not for profit" organisation. It has been supporting women into employment and helping them start new businesses by offering training and support services.

WEETU has a proven track record of successfully arranging network events for women who are new to business and the **WEETUnetwork** brand will extend this service to established employees and entrepreneurs in the Norfolk area.

This network group provides many personal and professional benefits to its members—and can do the same for you.

**Join us today.**



***Be part of the voice for women  
in Norfolk.***

# WEETU

WOMEN'S EMPLOYMENT ENTERPRISE  
AND TRAINING UNIT

### Our Aims:

- To provide a strong contact network, mutual encouragement and support to business women.
- To promote the formation of professional and social relationships
- To help develop management level skills and competencies
- To highlight the contribution of women in the business community
- To support greater progression of women in employment and business
- To influence local, regional and national policy issues affecting women

Membership is open to **all** women and will especially interest those who are either employed or who have their own business.

### Annual Membership Fees:

Individual Membership	£100 p.a.
Corporate Membership	£250 p.a.

### Monthly events:

The monthly cost may vary depending on location, but will typically be:

£15.00 Members

£20.00 Guests

# WEETUnetwork

## Membership Application Form

Full Name:

Business /Employer Name:

Job Title:

Contact Telephone Number (s):

Email:

Business Address:

Post Code:

I wish to apply for:

Individual membership

Corporate membership

Payment by:

Cheque

BACS

PayPal Invoice

Signature: